



(1) ()



가 , Duct , ,

1.

2.

(: 20~25)

3.

4. (UPS,)

5.

(가,)

20~25 ,

가

- ,

- ,

: Cell + {(-20(25)) × ±3mV}

(2)



LOT NO

1.

2. (LOT) (:)

3.

(20mm)

4.

5.

06 10 19 / AJ 6 J 19 / A 6 10 19
/ /

UXL - 700

: (1, 2, 3,.....)

: :

: (A:1 , B:2 , C:3 ,...L:12)

: (UXL)

(1:1 , 2:212:12)

: (700AH)

: (01, 02, 03, 31)

) 2006 10 19

(3)



,

()

1.

(, , ,)

2.

(/)

3.

(/)

Back-up

,

.

(4) , (AC/DC)



D/C

A/C

1. (UPS, ,)

Display

/

2.

()

3. D/C

A/C

/

- (: PbSO₄, Sulfation)

()

- AC 100Ah 5A (5%)

- D/C 0.001~0.0003 CA

()

(5) ,



()

()

1. Cell ()

: +0.2V, -0.1V

2. (:)

() 130~150% :

150~200% :

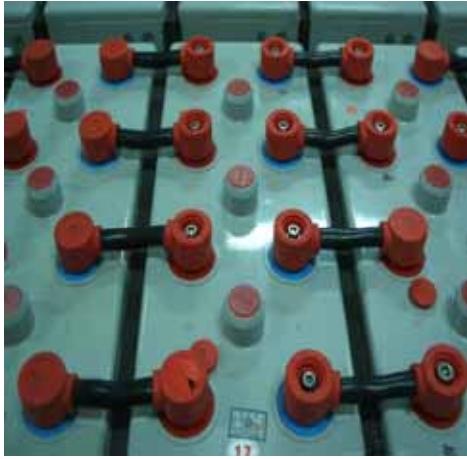
200% : ()

Option- Type

- (, / ,)

- 가

(6)



Cell

/

1. ()

	MSB,UXL,ES	VGS	PS
	150~200 Kfg.Cm	-	-
	255±10 Kfg.Cm	255±10 Kfg.Cm	150~250 kfg.Cm

1) ()

2) (+) (+) (-) (-)

.()

Drop (가)

3) (+) 5

4) 5

5)

:

(1)

1-1. Type

1)

2) 가

3) (+)(-)

4)

-

:

-

:



1.



2.

1-2. Type

- (+)(-)

1. , , 가

2. 가 (/HIOKI)

3. 가 (One - Pin/Two - Pin/)

4. 가 (, ,)

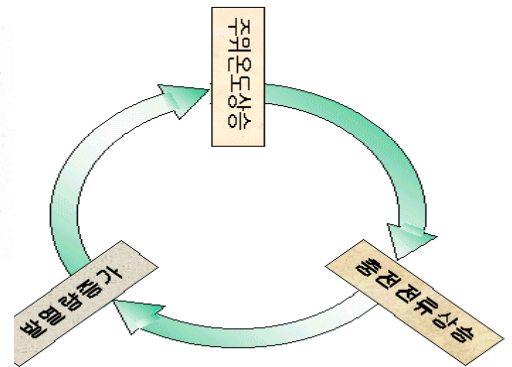
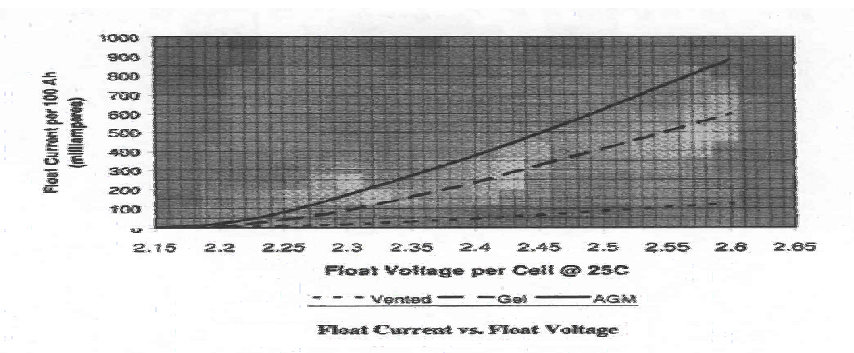
5. 가

6. cable connector

Cell

(2)

1. (2.23V 2.25V 가 2 가)
2. 가 Dry-out 가 .
3. ()
4. Error .
5. AC Ripple / 가



1. 가
2. 가
3. 가 Dry-out 가
4. ()
- 5.
6. 가
7. System (가)

